



Oil Tools

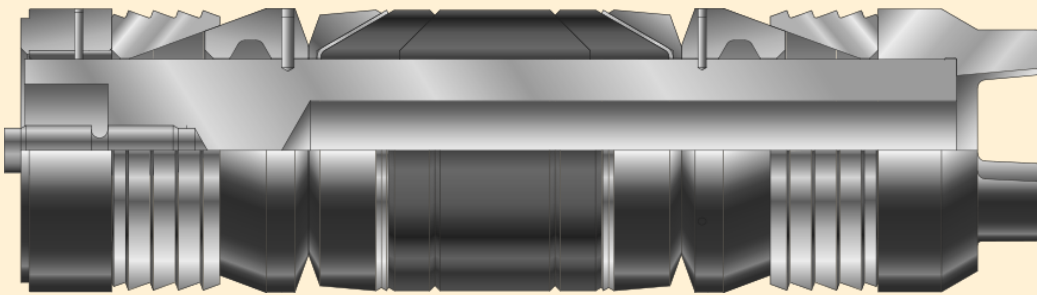
sales@ServaOilTools.com

ServaOilTools.com

+1 (940) 503-4437



WSO-BP WIRELINE SET BRIDGE PLUG



Model WSO-BP Wireline Set Bridge Plugs are compact, small OD and designed for easy drill out. These bridge plugs will set securely in all but the very highest tensile casing. A ratchet lock ring stores the setting force in the plug. The one piece packing element and metal back up rings combine for a superior seal. The case hardened, one piece slips virtually eliminate premature setting, yet can be easily drilled out. They are available for 2-3/8" through 20" casing.

Electric wireline set • Sets in any grade casing - including P-110 • Rated to 10,000 P.S.I at 350° F • One-piece slips hardened to depth of wicker only • Small O.D.'s for speed and safety when running • Rocker action metal back-ups prevent rubber extrusion • Can be set on any wireline pressure setting tool • Casing plugs top set with shear ring • Sets in proper sequence for positive pack-off and secure set • Drillable cast iron construction • For temporary or permanent service • Designed for extra high pressure and rapid drill-out • Plug stays set until gas pressure equalizes when drilling out.

FEATURES

Can be set directly with Owen style wireline setting tools.

Easy for mill out

Ratchet lock rings secure dynamic setting force.

Three piece packing element and rocker action metal back up rings combine for a superior seal.

Shear studs are Owen style and connect directly to Owen setting tools.

These bridge plugs can be run directly using Owen Setting Sleeves.

Crossovers are not required.

One company at the center of the energy revolution is uniquely equipped with the know-how and ingenuity to make possibilities happen—[SERVA group.com](http://SERVAgroup.com)



Oil Tools

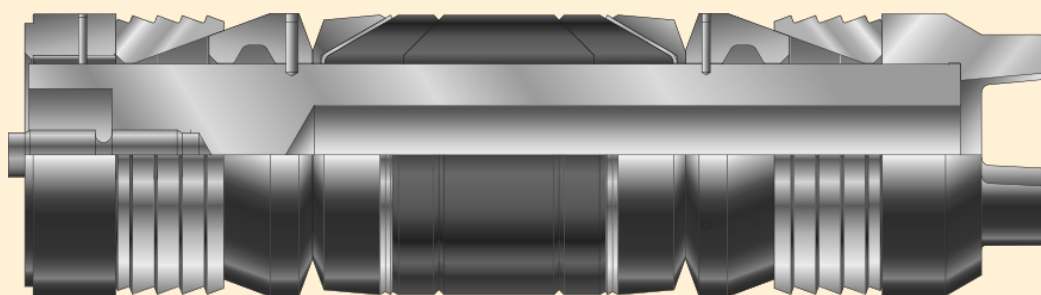
sales@ServaOilTools.com

ServaOilTools.com

+1 (940) 503-4437



WSO-BP WIRELINE SET BRIDGE PLUG



SERVA Specification Guide WSO-BP Wireline Set Bridge Plug

Casing OD (in)	Casing Wt (lbs/ft)	Setting Range Min (in)	Setting Range Max (in)	Tool OD (in)	Release Force (lbs)	Part Number
2 7/8	6.4-6.5	2.340	2.525	2.160	7,000	2820216322
3 1/2	5.7-10.3	2.867	3.258	2.750	13,000	2820275322
5 1/2	13-25	4.580	5.044	4.240	30,000	2820424322
5 3/4	22.5-25	4.580	5.044	4.240	30,000	2820424322

One company at the center of the energy revolution is uniquely equipped with the know-how and ingenuity to make possibilities happen—SERVAgroup.com